

PROGRESS ON PM PACKAGE

Roads & Bridges Sector

As on 11th August 2009

TRANS- ARUNACHAL HIGHWAY

DISBURSED TRAYS, ARUNACHAL HIGHWAY

A. Western Sector

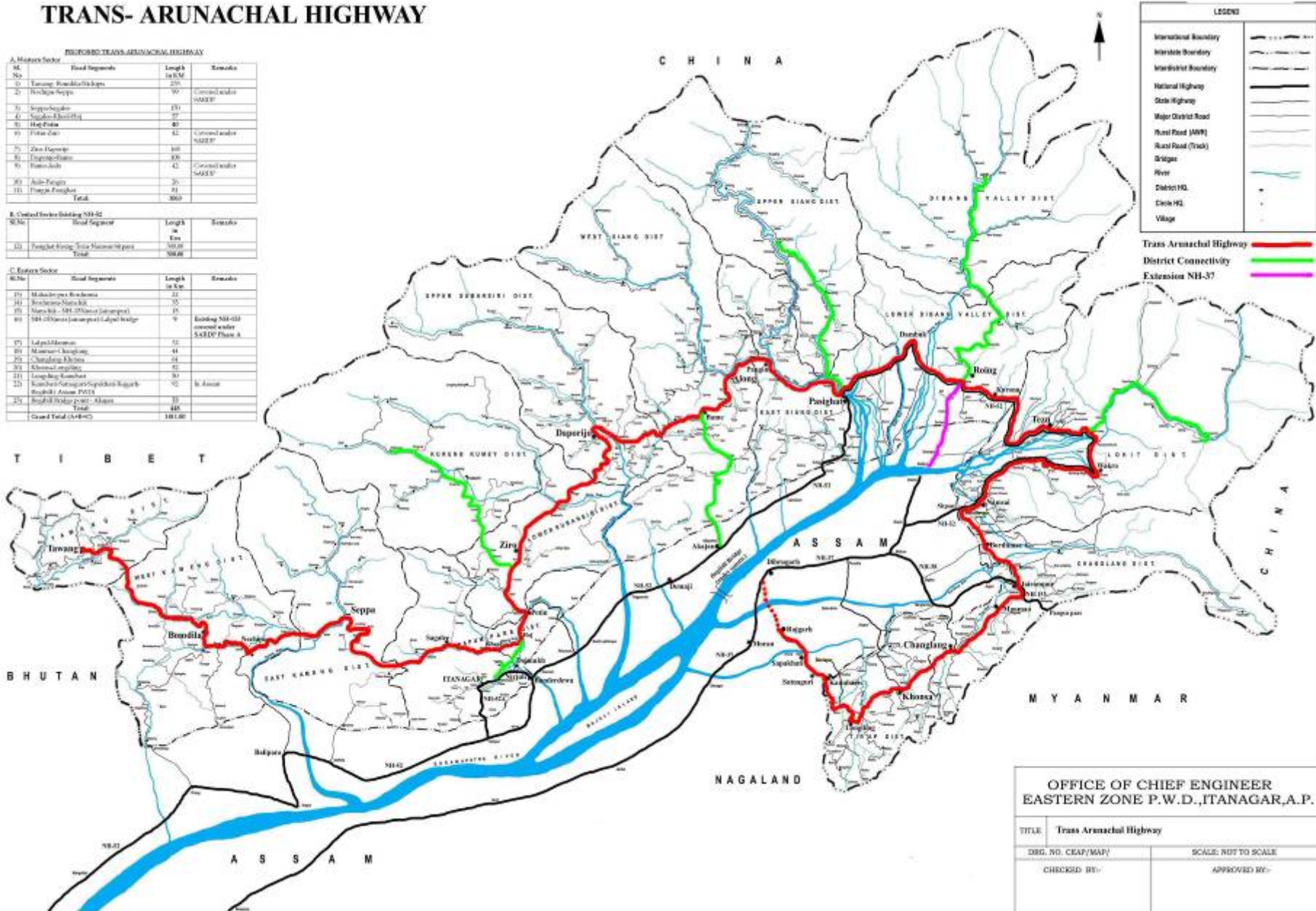
Sl.No	Road Segment	Length in Km	Remarks
1	Tawang - Bomdila/Changri	235	Completed under SARDP
2	Hemligga - Nya	99	Completed under SARDP
3	Ngaga - Ngaga	131	
4	Ngaga - Bhoi/Ha	97	
5	Hah - Faha	40	
6	Faha - Gao	42	Completed under SARDP
7	Ziro - Dapruet	100	
8	Dapruet - Chama	100	
9	Faha - Acha	42	Completed under SARDP
10	Achi - Fanga	30	
11	Fanga - Fongba	31	
Total		1003	

B. Central Sector (Under NH-52)

Sl.No	Road Segment	Length in Km	Remarks
12	Painghat - Faha - Faha - Maram - Chama	500.00	
Total		500.00	

C. Eastern Sector

Sl.No	Road Segment	Length in Km	Remarks
13	Mohandrapur - Baramulla	25	
14	Mohandrapur - Mura - Kila	35	
15	Mura - Kila - Mura - Maram (Interim)	15	
16	Mura - Maram (Interim) - Lalpat - Maram	0	Under NH-52 covered under SARDP Phase A
17	Lalpat - Maram	52	
18	Maram - Chama - Ngaga	44	
19	Chama - Ngaga - Faha	44	
20	Faha - Ngaga - Maram	52	
21	Ngaga - Maram - Chama	50	
22	Kamoh - Fongba - Fongba - Maram - Maram (Interim) - Maram	92	Under NH-52
23	Maram - Fongba - Maram - Maram	30	
24	Maram - Fongba - Maram - Maram	30	
25	Maram - Fongba - Maram - Maram	30	
Total		445	
Grand Total (A+B+C)		1948.00	



OFFICE OF CHIEF ENGINEER
EASTERN ZONE P.W.D., ITANAGAR, A.P.

TITLE: Trans Arunachal Highway	
DES. NO. CEAP/MAP/	SCALE: NOT TO SCALE
CHECKED BY:-	APPROVED BY:-

NATIONAL HIGHWAY - 229 (TAWANG TO PASIGHAT)

<i>Sl. No.</i>	<i>Segments</i>	<i>Length in (KM)</i>	<i>Remarks</i>
1.	TAWANG-BOMDILA-NECHIPU	233.00	Under execution by BRO as Two-Lane
2.	NECHIPU-SEPPA-KHODASO-SAGALEE-KHEEL-HOJ	311.00	<p>To be executed by APPWD/MORTH on ANNUITY mode. Pre-qualification meeting held on 5th November'2008 in Transport Ministry, New Delhi. Expression of Interest (EOI) is completed on 17th November'2008 in Transport Ministry.</p> <p>As asked for compensation package for Forest, Shifting of Electrical lines and Shifting of Water Supply lines submitted to Transport Ministry on 16th January '2009 & approved by the High Power Committee on 20th April'2009 for Rs. 57.33 Crores.</p> <p>Further, the cross-section of road, strip plan, details cost estimate submitted to the Transport Ministry on 23rd April '2009.</p>

NATIONAL HIGHWAY - 229 (TAWANG TO PASIGHAT)

<i>Sl. No.</i>	<i>Segments</i>	<i>Length in (KM)</i>	<i>Remarks</i>
			<p>For Financial Bid Transport Ministry, G.O.I. already short-listed the eligible bidder. The short-listed agencies are as follows:-</p> <ol style="list-style-type: none">1. KMC Construction2. IRCON INTERNATIONAL Ltd.3. IL&FS Transportation Networks Ltd.4. Soma Enterprises5. DSC Creating Infrawealth6. Oriental Structural Engineers Pvt. Ltd.7. Maytas Infra Assets Ltd.8. Gayatri – DLF Consortium <p>10th August Financial Bid open in the Transport Ministry, Govt. of India. Evaluation process is in progress in the Ministry.</p>
3.	POTIN-ZIRO-DAPORIJO-TAI-BAME-AALO-PANGIN	407.00	To be executed by APPWD/MORTH on ANNUITY mode. Pre-qualification meeting held on 5th November'2008 in Transport Ministry, New Delhi. Expression of Interest (EOI) is completed on 17th November'2008 in Transport Ministry.

NATIONAL HIGHWAY - 229 (TAWANG TO PASIGHAT)

<i>Sl. No.</i>	<i>Segments</i>	<i>Length in (KM)</i>	<i>Remarks</i>
----------------	-----------------	-----------------------	----------------

As asked for compensation package for Forest, Shifting of Electrical lines and Shifting of Water Supply lines submitted to Transport Ministry on 16th January '2009 & approved by the High Power Committee on 20th April'2009 for Rs. 47.95 Crores.

Further, the cross-section of road, strip plan, details cost estimate submitted to the Transport Ministry on 23rd April '2009.

For Financial Bid Transport Ministry, G.O.I. already short-listed the eligible bidder. The short-listed agencies are as follows:-

1. KMC Construction
2. IRCON INTERNATIONAL Ltd.
3. IL&FS Transportation Networks Ltd.
4. Soma - Maytas
5. DSC Creating Infrawealth
6. Gayatri – DLF Consortium

10th August Financial Bid open in the Transport Ministry, Govt. of India. Evaluation process is in progress in the Ministry.

NATIONAL HIGHWAY - 229 (TAWANG TO PASIGHAT)

<i>Sl. No.</i>	<i>Segments</i>	<i>Length in (KM)</i>	<i>Remarks</i>
4.	HOJ TO POTIN	22.00	To be executed by APPWD on E.P.C. mode. DPR under preparation and will be submitted to the Transport Ministry by August 2009.
5.	PANGIN-PASIGHAT	74.00	To be executed by APPWD on E.P.C. mode, the total reach converted into 4 segments detail survey and DPR under preparation is in progress and will be submitted by- i) 0 to 28 km by August 2009 ii) 28 to 42 km by August 2009 iii) 42 to 59 Km by October 2009 as Realignment required iv) 59 to 74 Km by August 2009
TOTAL =		1055.00	

NATIONAL HIGHWAY – 52 (PASIGHAT TO MAHADEVPUR)

<i>Sl. No.</i>	<i>Segments</i>	<i>Length in (KM)</i>	<i>Remarks</i>
1.	PASIGHAT TO MAHADEVPUR (SITAPANI)	190.00	Under execution by BRO as Two-Lane.
TOTAL =		190.00	

NATIONAL HIGHWAY - 52B (MAHADEVPUR TO NH-37 NEAR DIBRUGARH IN ASSAM)

<i>Sl. No.</i>	<i>Segments</i>	<i>Length in (KM)</i>	<i>Remarks</i>
1.	MAHADEVPUR- NAMCHICK-JAIRAMPUR- MANMAO-CHANGLANG- KHONSA-TISSA- LONGDING-KANUBARI	314.00	<p>To be implemented by APPWD on EPC mode. PFR submitted to MORTH. Officials from MORTH inspected the road alignment from 2nd January to 5th January '2009.</p> <p>23.00 Km point of C-K Road to 64.00 Km i.e. upto Khonsa realignment suggested by the Chief Engineer (P-10). Survey for re-alignment already completed. Now, strip plan will be re-submitted for final approval from the Transport Ministry.</p> <p>Detailed survey for compensation package, cross section of Roads, strip plan and DPR is in progress. The segments wise details are as follows:-</p> <p>i) Mahadevpur-Bordumsa 00-18.00 under execution through NEC fund. After completion of NEC work, Detail Project Report will be submitted.</p>

NATIONAL HIGHWAY - 52B (MAHADEVPUR TO NH-37 NEAR DIBRUGARH IN ASSAM)

<i>Sl. No.</i>	<i>Segments</i>	<i>Length in (KM)</i>	<i>Remarks</i>
			<p>ii) Bordumsa – Buridihing Bridge Point 18.00-34.00 under execution through NEC fund. After completion of NEC work, Detail Project Report will be submitted.</p>
			<p>iii) Buridihing Bridge Point– NamchikAli Road- 34.00-52.00 under execution through NEC fund. After completion of NEC work, Detail Project Report will be submitted.</p>
			<p>iv) NamchikAli road - NH 153 - 52.00-59.00 detail survey completed and inception report also submitted on 7th August 2009 to Chief Engineer (EZ) for approval and preparation of Detail Project Report will be submitted by October 2009.</p>
			<p>v) NH-153 – Lalpool 59.00-65.00 two lane is in progress under SARDP –NE</p>
			<p>vi) Lalpool to Manmao 65 to 95 Km, detail survey completed and inception report also submitted on 7th August 2009 to Chief Engineer (EZ) for approval and preparation of Detail Project Report will be submitted by October 2009.</p>
			<p>vii) Manmao to 22 Km Point of Manmau Changlang Road 95.00 to 115.00 Km, detail survey completed and inception report also submitted on 7th August 2009 to Chief Engineer (EZ) for approval and preparation of Detail Project Report will be submitted by September 2009.</p>

NATIONAL HIGHWAY - 52B (MAHADEVPUR TO NH-37 NEAR DIBRUGARH IN ASSAM)

<i>Sl. No.</i>	<i>Segments</i>	<i>Length in (KM)</i>	<i>Remarks</i>
			<p>viii) 22 Km point of Manmao-Changlang Road to Changlang 115.00 to 137 Km, detail survey completed and inception report also submitted on 7th August 2009 to Chief Engineer (EZ) for approval and preparation of Detail Project Report will be submitted by November 2009.</p> <p>ix) Changlang to Khonsa 137.00 to 204.00 Km, stretch needs re-alignment. Survey works being taken up.</p> <p>x) Khonsa-Tissa 204.00 to 248.00 Km, detail survey is in progress. Final DPR will be submitted by September 2009.</p> <p>xi) Tissa-Longnaksi 248.00 to 301.00 Km, detail survey is in progress. Final DPR will be submitted by September 2009.</p> <p>xii) Longnaksi to Kanubari 301.00 to 314.00 Km, detail survey is in progress. Final DPR will be submitted by August 2009.</p>
2.	KANUBARI TO NH-37 NEAR DIBRUGARH IN ASSAM	75.00	PFR will be submitted by Assam PWD
TOTAL =		389.00	

NATIONAL HIGHWAY - 37 EXTENSION (SOIKHOWAGHAT TO MEKA (ROING))

<i>Sl. No.</i>	<i>Segments</i>	<i>Length in (KM)</i>	<i>Remarks</i>
1.	ISLAMPUR TINALI TO SHANTIPUR	32.00	DPR will be submitted by Assam PWD and approved for Rs. 10.49 Crore
2.	SHANTIPUR TO ROING (MEKA)	19.50	To be executed by APPWD on E.P.C. mode. PFR already submitted to MORTH. Ministry officials have inspected the Road alignment and approved. DPR submitted to the Transport Ministry, Govt. of India on 13 th July 2009 for an amount of Rs. 57.23 Crore on objection of Ministry recasting of DPR is in progress and will be submitted to the Chief ENgineer (EZ) by 10 th August 2009. For onward submission to the Transport Ministry, Govt. of India.
TOTAL =		51.50	

TWO-LANE CONNECTIVITY FOR DISTRICT HEADQUARTER

<i>Sl. No.</i>	<i>Segments</i>	<i>Length in (KM)</i>	<i>Remarks</i>
1.	KOLORIANG - JORAM	158.00	Under BRO
2.	YINGKIONG - MARIYANG - PASIGHAT	140.00	<p>The work will be executed by APPWD on EPC mode. PFR already submitted to MORTH.</p> <p>Road alignment not yet approved by the MoRTH.</p> <p>i) Yingkiong to Gobuk, 0.00 to 27.00 Km detail survey completed and inception report also submitted on 7th August 2009 to Chief Engineer (EZ) for approval and preparation of Detail Project Report will be submitted by October 2009.</p> <p>ii) Gobuk to Mariyang, 27.00 to 49.00 Km. detail survey completed and inception report also submitted on 7th August 2009 to Chief Engineer (EZ) for approval and preparation of Detail Project Report will be submitted by October 2009.</p>

TWO-LANE CONNECTIVITY FOR DISTRICT HEADQUARTER

<i>Sl. No.</i>	<i>Segments</i>	<i>Length in (KM)</i>	<i>Remarks</i>
			<p>iii) Mariyang to Sijon Nallah, 49.00 to 79.00 Km detail survey completed and inception report also submitted on 7th August 2009 to Chief Engineer (EZ) for approval and preparation of Detail Project Report will be submitted by October 2009.</p> <p>iv) Sijon Nallah-Sige Korang 79.00 to 118.00 Km, detail survey is in progress for submission of inception report to the Chief Engineer (EZ) for approval and preparation of Detail Project Report.</p> <p>v) Sige Korang to Pasighat 118.00 to 140.00 Km. detail survey is in progress for submission of inception report to the Chief Engineer (EZ) for approval and preparation of Detail Project Report.</p>
3.	ANINI - MEKA (ROING)	235.00	BRO Roads
4.	HAWAI - HAWAI CAMP	126.00	BRO Roads

TWO-LANE CONNECTIVITY FOR DISTRICT HEADQUARTER

<i>Sl. No.</i>	<i>Segments</i>	<i>Length in (KM)</i>	<i>Remarks</i>
5.	HOJ - YUPIA - PAPPU ROAD	35.00	<p>The work will be executed by APPWD on EPC mode. PFR already submitted to MORTH. Final DPR (from Pappu Road to Khola Camp – 10.00 Km) submitted to Transport Ministry on 2nd March'2009.</p> <p>On scrutiny R.O. station at Itanagar raised some observation, action taken rectified DPR submitted to the Transport Ministry, Govt. of India on 6th August 2009 for an amount Rs. 77.45 Crore.</p>
6.	BAME - LIKABALI - AKAJAN	114.00	BRO Roads
TOTAL =		808.00	

NATIONAL HIGHWAY - 52A (BANDERDEWA TO HOLONGI VIA ITANAGAR)

<i>Sl. No.</i>	<i>Segments</i>	<i>Length in (KM)</i>	<i>Remarks</i>
4-LANING OF NH-52A IN URBAN SECTOR (20.00 KM)			
1.	BANDERDEWA TO ITANAGAR	31.50	<p>i) Detailed DPR for 4-Laning is in progress for Urban Sector from Konkar Nallah to Pappu Nallah Bridge point (Naharlagun) i.e. 4.00 Km. The DPR includes compensation package for all sector and detail estimate for Roads and Bridges. The DPR will be submitted to Transport Ministry on 20th May/2009 but as per observation of the Ministry, DPR was recasted for Rs. 47.96 Crore on 24th July 2009. Compensation package for shifting of utilities also submitted to the Transport Ministry for an amount of Rs. 21.48 Crore.</p> <p>ii) Detailed DPR for 4-Laning is in progress for Urban Sector from P.C.C.F. office to Police Headquarter (Itanagar) i.e. 6.00 Km. The DPR includes compensation package for all sector and detail estimate for Roads and Bridges. The DPR will be submitted to Transport Ministry by November 2009.</p>

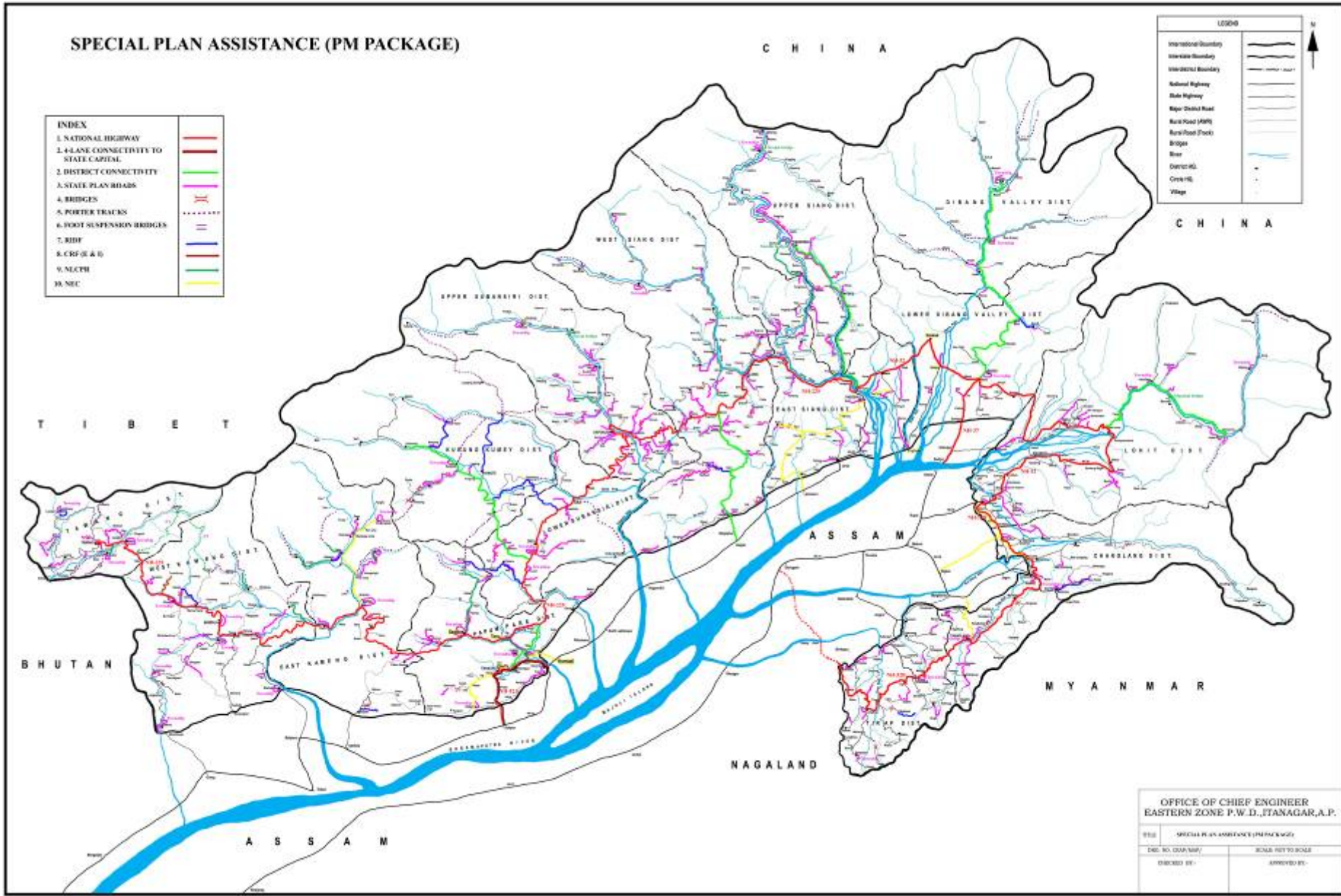
NATIONAL HIGHWAY - 52A (BANDERDEWA TO HOLONGI VIA ITANAGAR)

<i>Sl. No.</i>	<i>Segments</i>	<i>Length in (KM)</i>	<i>Remarks</i>
	<i>4-LANING OF NH-52A IN URBAN SECTOR (20.00 KM)</i>		
2.	ITANAGAR TO HOLONGI	20.37	Detail survey is in progress by outsource. Police Head Quarter to Chimpu detail survey and DPR is in progress and will be submitted to the Ministry by 31th August 2009.
TOTAL =		51.87	

SPECIAL PLAN ASSISTANCE (PM PACKAGE)

INDEX	
1. NATIONAL HIGHWAY	
2. 4-LANE CONNECTIVITY TO STATE CAPITAL	
2. DISTRICT CONNECTIVITY	
3. STATE PLAN ROADS	
4. BRIDGES	
5. PORTER TRACKS	
6. FOOT SUSPENSION BRIDGES	
7. RIDE	
8. CRF (E & D)	
9. MCTP	
10. SEC	

LEGEND	
International Boundary	
State Boundary	
District Boundary	
National Highway	
State Highway	
Road District Road	
Road Road (MR)	
Road Road (Foot)	
Bridge	
River	
District HQ	
Creek HQ	
Village	



OFFICE OF CHIEF ENGINEER EASTERN ZONE P.W.D., ITANAGAR, A.P.	
DATE: _____	SCALE: NOT TO SCALE
DISIGNED BY: _____	APPROVED BY: _____

Detail Statement on distribution of allocation & LOC recommended upto 11th August 2009 under Special Plan Assistance (PM Package)

A) FINANCIAL DETAILS :-

TOTAL APPROVED COST :

1) Rs. 217.76 CRORE (AGAINST WORKS)

2) Rs. 2.17 CRORE (AGAINST MONITORING)

TOTAL :- Rs. 219.93 CRORE

TOTAL RELEASED BY GOVT. OF ARUNACHAL PRADESH :-

1) Rs. 217.76 CRORE (AGAINST WORKS)

2) Rs. 0.39 CRORE (AGAINST MONITORING)

TOTAL :- Rs. 218.15 CRORE

EXPENDITURE UPTO 11th August 2009 :- Rs.192.72 CRORE (AGAINST WORKS)

Rs. 0.39 CRORE (AGAINST MONITORING)

TOTAL = Rs.193.11 CRORE

B) PHYSICAL DETAILS :-

TOTAL NO. OF SCHEMES TO BE COMPLETED :- 1064 NOS.

TOTAL NO. OF SCHEMES COMPLETED UPTO 11th August 2009 :- 854 NOS.

UC submitted to State Planning Department upto 11th August '09:-Rs.176.10 Crores

SECTOR-WISE DETAILS OF TARGET AND ACHIVEMENT AS ON 11th August 2009
(Financial figures in Lakhs)

Sl. No.	Sub-head	Physical		Financial	
		Target	Achievement	Target	Achievement
1.	Roads	751	620	7553.55	6726.61
2.	Bridges	77	56	1796.50	1463.89
3.	Porter Tracks	60	52	451.05	408.42
4.	Foot Suspension Bridges	128	89	2775.36	2211.13
5.	RIDF (State Share)	18	12	5052.90	4508.96
6.	CRF (E&I) (State Share)	2	2	483.55	483.55
7.	NLCPR (State Share)	18	16	1712.05	1670.50
8.	NEC (State Share)	9	6	1951.00	1759.60
9.	Monitoring	1	1	39.00	39.00
TOTAL =		1064	854	21815.00	19271.66

THANK YOU