



STATUS OF ON-GOING NLCPR PROJECTS UNDER EASTERN ZONE, PWD

FOR 2018-19



SUMMARY OF ON-GOING NLCPR PROJECTS FOR 2018-19 UNDER PWD, EASTERN ZONE

Sl. No.	Year of sanction	Nos of scheme	Total Sanctioned amount	Funds released till March'18	Expdr till March'18	Funds released during 2018-19	Expdr during 2018-19 till	Cumm. Expdr till	UC submitted till 03/2018	Remarks
1	2	3	4	5	6	7	8	9	10	11
1	2008-09	2	5466.88	2936.35	2514.09	0.00	0.00	2514.09	2472.22	
2	2009-10	1	1544.61	1210.30	1210.30	0.00	0.00	1210.30	1049.05	
3	2011-12	1	501.55	195.31	195.31	0.00	0.00	195.31	195.31	
4	2012-13	1	1083.91	827.97	827.97	179.90	0.00	827.97	827.97	
5	2013-14	6	10692.13	7332.96	6561.12	0.00	0.00	6561.12	5672.25	
6	2014-15	1	312.98	112.67	111.51	0.00	0.00	111.51	111.51	
TOTAL		12	19602.06	12615.56	11420.30	179.90	0.00	11420.30	10328.31	



ACTUAL BALANCE FUNDS NEEDED FOR COMPLETION OF ONGOING NLCPR PROJECTS FOR 2018-19 UNDER PWD, EASTERN ZONE

Sl. No.	Year of sanction	Nos of scheme	Total Sanctioned amount	Funds released till 3/18	CummEx pdr till 3/18	Balance sanctioned amount	Actual bal fund reqd	Unspent funds (col 5-col 7)	Fund recd. drg 2018-19	UC submttd till 3/18	Remarks
1	2	3	4	5	6	7	8	9	10	11	12
1	2008-09	2	5466.88	2936.35	2514.09	2530.53	430.41	405.82	2472.22	One for foreclosure; 2nd PDC 3/20
2	2009-10	1	1544.61	1210.30	1210.30	334.31	0.00	0.00	1049.05	Proposed for foreclosure. Balance funds in Part-V.
3	2011-12	1	501.55	195.31	195.31	306.24	0.00	195.31	Scheme for SLEC view.
4	2012-13	1	1083.91	827.97	827.97	255.94	179.9	0.00	179.90	827.97	PDC Dec'18
5	2013-14	6	10692.13	7332.96	6561.12	3359.17	1263.83	771.84	5672.25	One PCR by Aug 18; One for foreclosure; One PDC 12/18; Three nos PDC 3/20
6	2014-15	1	312.98	112.67	111.51	200.31	200.31	1.16	111.51	PDC 3/20
TOTAL		12	19602.06	12615.56	11420.3	6986.5	2074.45	1195.26	179.9	10328.31	



PHYSICAL TARGETS & ACHIEVEMENTS UNDER NLCPR DURING 2018-19 UNDER EASTERN ZONE

Sl. No.	Sub-Head	Unit	Target	Achievement upto
1	2	3	4	5
1	Earth work	Km	1.40	
2	GSB/WBM-I	Km	6.88	
3	WBM-II	Km	34.99	
4	WBM-III	Km	30.90	
5	Black Topping	Km	42.13	
6	R & B Wall	Mtr.	199.00	
7	Boundary wall	Mtr	323.80	
8	RCC/Steel Bridge	No/Mtr.	2/25.00	
9	School Building	No.	2	
10	Hostel Building	No.	1	
11	Indoor Multi Sport Stadium	No.	1	



ON GOING SCHEMES UNDER EASTERN ZONE

- 1. C/o Road from Hawaii District headquarter to Manchal Administrative Centre (32.01 Km)(2008-09)**
- 2. C/o Road from 4 Km point of Anini-Dambuine BRO Road to Etabe in Dibang Valley District(2008-09)**
- 3. C/o Road from Jia Tinali on Roing Shantipur road to Bijari via Idili (9.20 Km) (2009-10)**
- 4. Establishment of V.K.V. at Changlang (2011-12)**
- 5. Infrastructure Development of Govt. Higher Secondary School at Hawaii (C/o School Building) (2012-13)**



ON GOING SCHEMES UNDER EASTERN ZONE

- 6. Road from 168 Km point of Roing – Anini BRTF Road to Echigo village (12.00 Km) (2013-14)**
- 7. Strengthening & Improvement of Changlang to Khimiyang Road (Phase-II) 0 to 14.50 Km (2013-14)**
- 8. C/o Road from Hawaii District Headquarter to Manchal Administrative Circle (Phase- II) C/o Bridges (2013-14)**
- 9. Road from Kanubari to Bogapani via Ranglua and Lawnu CO HQ (41.00 Km) (Phase-I) 0.00 to 29.00 Km (2013-14)**
- 10. Road from Shumak to Shalom via Chinhan (15.00 Km) upto WBM Level (2013-14)**
- 11. Establishment of V.K.V. Residential School at Longding (2013-14)**
- 12. C/o Indoor Multi Sports Complex at Namsai (2014-15)**

**C/O ROAD FROM HAWAI DIST. H.Q TO MANCHAL ADMNT. CIRCLE (32.01 KM) IN A.P. PH-I
(SH : FC & CULVERT)**



STARTING POINT



FORMATION CUTTING CH: 0.50KM

**C/O ROAD FROM HAWAI DIST. H.Q TO MANCHAL ADMNT. CIRCLE (32.01 KM) IN A.P. PH-I
(SH : FC & CULVERT)**



**VILLAGE LONGLING CONNECTING
CH: 5.30KM**



**S/CULVERT 1.50M SPAN AT
CH: 6.80KM**

**C/O ROAD FROM HAWAI DIST. H.Q TO MANCHAL ADMNT. CIRCLE (32.01 KM) IN A.P. PH-I
(SH : FC & CULVERT)**



**S/CULVERT 1.50M SPAN AT
CH: 8.75KM**



**S/CULVERT 1.50M SPAN AT
CH: 9.78KM**

**C/O ROAD FROM HAWAI DIST. H.Q TO MANCHAL ADMNT. CIRCLE (32.01 KM) IN A.P. PH-I
(SH : FC & CULVERT)**



S/CUL-2M SPAN AT CH: 9.93KM



FORMATION CUTTING AT CH: 11.60KM



YEAR : 2008-09

NAME OF PROJECT : C/o Road from BRO (4 Km point) on Anini-Dambuine Road to Etabe in Dibang Valley District

SANCTION NO. & DATE : DNER/NLP/AP/123/2008 dated :- 28/03/09

SANCTION AMOUNT : Rs. 2213.96 lakhs (CS : Rs. 1992.56 lakhs & SS : Rs. 221.40 lakhs)

(Financial figures in lakhs)

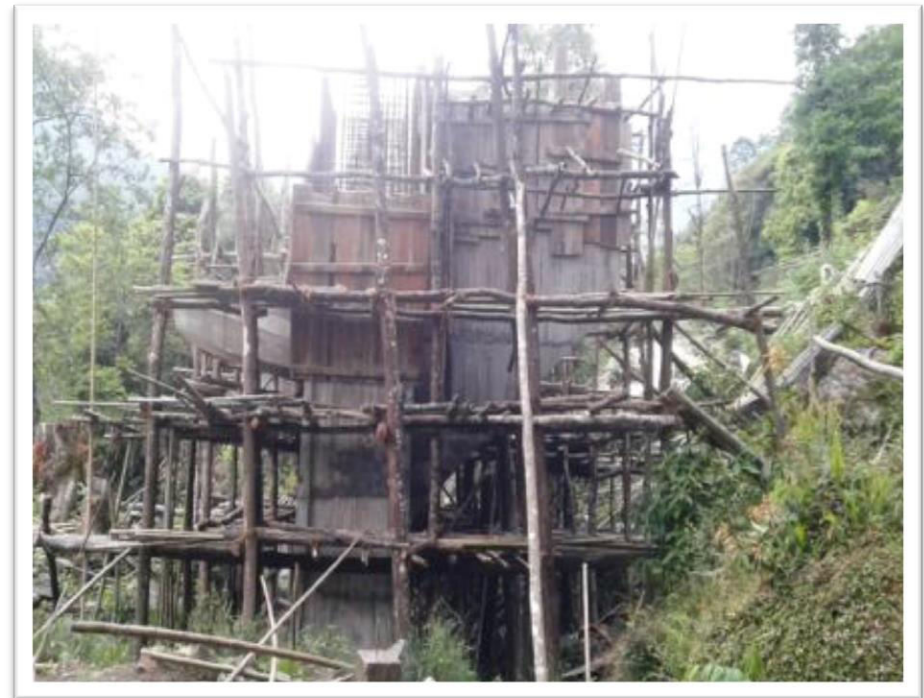
Cumulative Funds Released		Scope of Work		Progressive Achievement Upto 3/2018		Target during 2018-19		Achievment during 2018-19		Cumulative Achievement upto		UC Status/ Remark
		Phy.		Fin.	Phy.	Fin.	Phy.	Fin.	Phy.	Fin	Phy.	
	Rate											
CS-(2009-10)	697.40	F/Cutting-9.147 Km	25.20	2213.96	9.00	1361.29	-	422.26				UC Submitted for Rs. 1332.25 Lakhs
CS(2015-16)	864.75	S/Cul 1.5 Mtr-15 Nos	4.29		15		-					
SS(2011-12)	60.40	S/Cul 2 Mtr-30 Nos	7.9		30		-					
SS(2013-14)	20.00	S/Cul 3 Mtr-6 Nos	9.63		2		-					
SS(2015-16)	92.00	S/Cul 6 Mtr-4 Nos	12.40		--		-					
SS(2017-18)	49.00	R/Wall 3 Mtr -703 Mtr	0.22		721.70		-					
Total :	1783.55	B/Wall 3 Mtr -297 Mtr	0.21		319.40		-					
		WBM-I-9.237 km	10.10		6.10		-					
		WBM-II-9.237 Km	6.20		6.10		-					
		WBM-III-9.237 Km	12.50		6.10		-					
		B/Topping-9.237 km	974.80		6.10		-					
		Steel Suspension Bridge-138 Mtr			Both abutment & A/block compltd .		Super structure – 70%					

**C/O ROAD FROM 4 KM POINT OF ANINI DAMBUINE BRO ROAD TO ETABE
IN DIBANG VALLEY DISTRICT.**



RIGHT BANK ABUTMENT

LEFT BANK ABUTMENT



**C/O ROAD FROM 4 KM POINT OF ANINI DAMBUINE BRO ROAD TO ETABE
IN DIBANG VALLEY DISTRICT.**



ANCHOR BLOCK RIGHT BANK

**C/O ROAD FROM 4 KM POINT OF ANINI DAMBUINE BRO ROAD TO ETABE
IN DIBANG VALLEY DISTRICT.**



ANCHOR BLOCK LEFT BANK



YEAR : 2009-10

NAME OF PROJECT : C/o Road from Jia Tinali on Roing Shantipur road (9.20 Km) to Bijari via Idili.

SANCTION NO. & DATE : DNER/NLP/AP/122/2008 dated :- 05/02/2010.

SANCTION AMOUNT : Rs. 1544.61 lakhs (CS : Rs. 1390.15 lakhs & SS : Rs. 154.46 lakhs)

(Financial figures in lakhs)

Cumulative Funds Released		Scope of Work		Progressive Achievement upto 3/2018		Target during 2018-19		Achievement during 2018-19		Cumulative Achievement upto		UC Status/ Remark
		Phy.	Fin.	Phy.	Fin.	Phy.	Fin.	Phy.	Fin.	Phy.	Fin.	
CS (2009-10)	545.15	F/Cutting-18.90 Km		18.90		--		--				UC Submitted CS: 944.05 SS: 105.00 Tot: 1049.05 Rs. 161.25 lakhs kept Deposit Part V, Scheme Proposed to be closed.
CS (2012-13)	545.15	Boulder crated wall-5091 cum (50 Mtr)		270		--		--				
SS (2015-16)	120.00	WBM-I-14.90 km		2.746		--		--				
Total-	1210.30	WBM-II-14.90 Km		6.746		--		--				
		WBM-III-14.90 km		6.746		--		--				
		B/Topping-14.90 km		6.746		--		--				
		S/Cul 1 Mtr-11 Nos		4		--		--				
		S/Cul 2 Mtr-6 Nos		6		--		--				
		S/Cul 4 Mtr-9 nos		8		--		--				
		S/Cul 6 Mtr-8 Nos		4		--		--				
			1544.60		1210.30		--		--			

**C/O ROAD FROM JIA TINALI ON ROING SHANTIPUR ROAD (CH. 9.20KM) TO BIZARI
VIA IDILI (LENGTH 19.80 KM)**



EARTH WORK



WBM-I



WBM-II



WBM-III

**C/O ROAD FROM JIA TINALI ON ROING SHANTIPUR ROAD (CH. 9.20KM) TO BIZARI
VIA IDILI (LENGTH 19.80 KM)**



CULVERT 4.0 M SPAN



CULVERT 6.0 M SPAN



BOULDER CRATED WALL



BT



YEAR : 2011-12

NAME OF PROJECT : Establishment of V.K.V. at Changlang.

SANCTION NO. & DATE : DNER/NLP/AP/138/2009 dated :- 23/09/2011

SANCTION AMOUNT : Rs. 501.55 lakhs (CS : Rs. 451.40 lakhs & SS : Rs. 50.15 lakhs)

(Financial figures in lakhs)

Cumulative Funds Released		Scope of Work			Progressive Achievement upto 3/2018		Target during 2018-19		Achievement during 2018-19		Cumulative Achievement upto		UC Status/ Remark
		Phy.		Fin.	Phy.	Fin.	Phy.	Fin	Phy.	Fi n.	Phy.	Fin.	
			Rate										
CS(2012-13)	177.50	School Bldg (D/Storey)- 1834.58 sqm	225.70	501.60	-	195.31	100%	306.24					UC Submitted CS: 177.55 SS: 17.76 Total : 195.31 2 nd release awaited for more than four years. SLEC to review case RE Required
SS(2015-16)	17.76	Hostel Bldg 40 boarders- 1399.32 sqm	188.15		Both blocks compltd except finishing (90 %)		100%						
Total-	195.31	F/Cutting-990 Mtr	25.56		990		-						
		G.S.B.-990 Mtr	7.24		200		-						
		T-I-2 Nos	25.79		T-I -2 Nos upto P/L		-						
		T-II- 2 Nos			T- II- 2 Nos compt. Upto L/L		-						

ESTABLISHMENT OF V.K.V AT CHANGLANG



HOSTEL BLOCK NO.1



HOSTEL BLOCK NO.2

ESTABLISHMENT OF V.K.V AT CHANGLANG



Approach Road



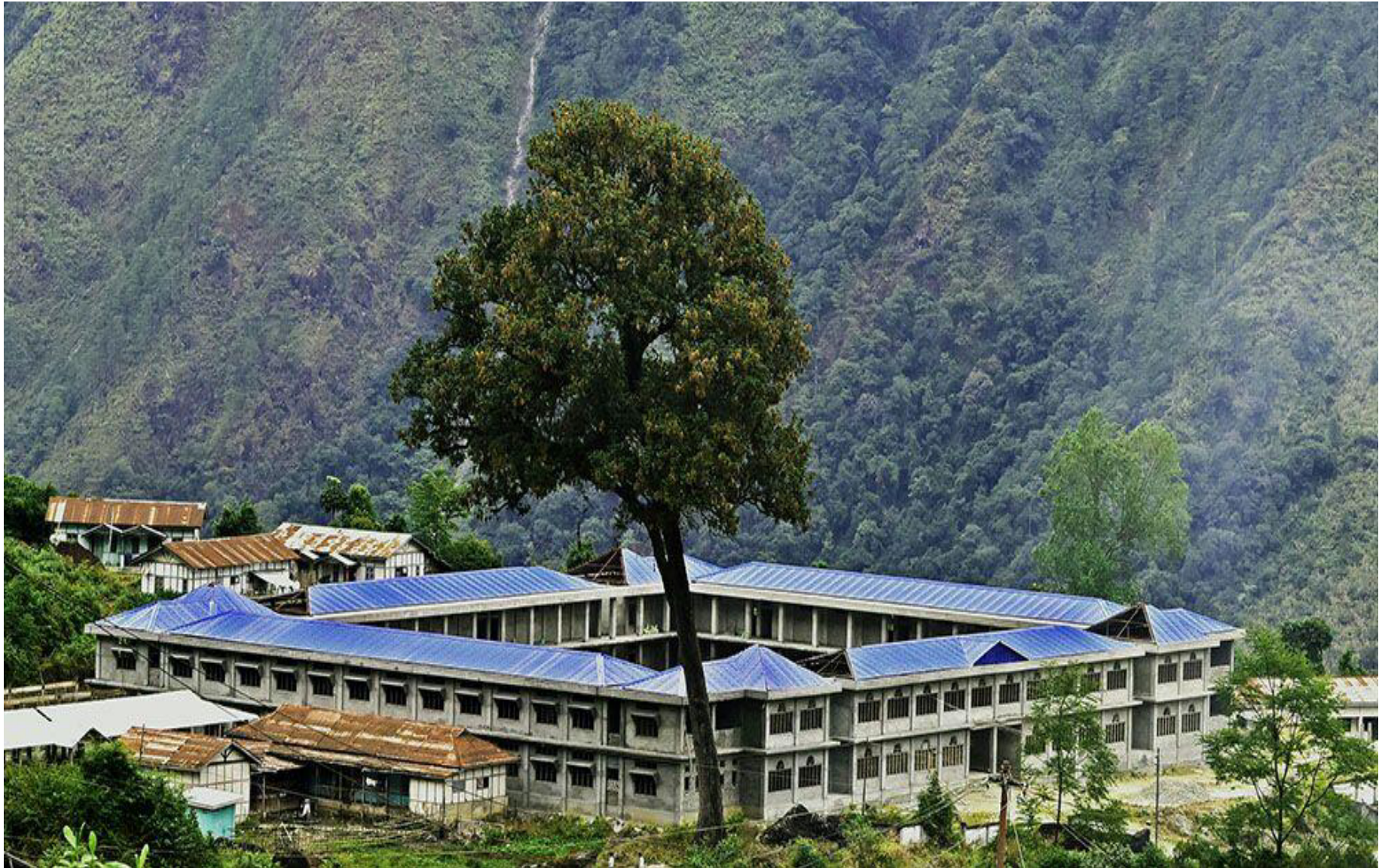
T-II- 2 Nos upto lintel level



SANCTION AMOUNT : Rs. 1083.91 lakhs (CS : Rs. 975.52 lakhs & SS : Rs. 108.39 lakhs)

[illegible]

**INFRASTRUCTURE DEVELOPMENT OF
GOVT. HIGHER SECONDARY SCHOOL , HAWAI
SH : C/O SCHOOL BUILDING**



YEAR : 2013-14



NAME OF PROJECT : Construction of Road from 168 Km point of Roing – Anini BRTF Road to Echigo village (12.00 Km).

SANCTION NO. & DATE : DNER/NLP/AP/201/2013 dated :- 17/09/2013

SANCTION AMOUNT : Rs. 1861.21 lakhs (CS : Rs. 1675.09 lakhs & SS : Rs. 186.12 lakhs)

(Financial figures in lakhs)

Cumulative Funds Released		Scope of Work		Progressive Achievement upto 3/2018		Target during 2018-19		Achievement during 2018-19		Cumulative Achievement upto 3/2018		UC Status/ Remark
		Phy.	Fin.	Phy.	Fin.	Phy.	Fin.	Phy.	Fin.	Phy.	Fin.	
	Rate											
CS (2013-14)	670.03	F/Cutting-11.88 Km	42.12	10.48		1.40						UC Submitd for Rs. 1131.38 Lakhs
CS (2017-18)	590.78											
SS (2016-17)	67.03	S/Cul 1.5 Mtr-41 Nos	5.58	41		-						
SS (2017-18)	119.09	S/Cul 2 Mtr-13 Nos	10.48	13		-						
Total-	1446.93	S/Cul 3 Mtr-3 Nos	12.75	3		-						
		S/Cul 6 Mtr-4 Nos	15.95	4		-						
		R/Wall 3 Mtr -440 Mtr	0.29	421	1131.28	19	315.65					
		B/Wall 3 Mtr -200 Mtr	0.28	200		-						
		G.S.B.-11.88 Km	17.54	5.00		6.88						
		WBM-II-11.88 Km	10.92	-		11.88						
		WBM-III-11.88 Km	11.00	--		11.88						
		B/Topping-11.88 Km	16.95	--		11.88						

C/O ROAD FROM 168 KM POINT OF ROING-ANINI BRTF ROAD TO ECHIGO (12.00 KM) SH : FORMATION CUTTING



0.00 KM



0.400 KM



0.890KM



2.420 KM

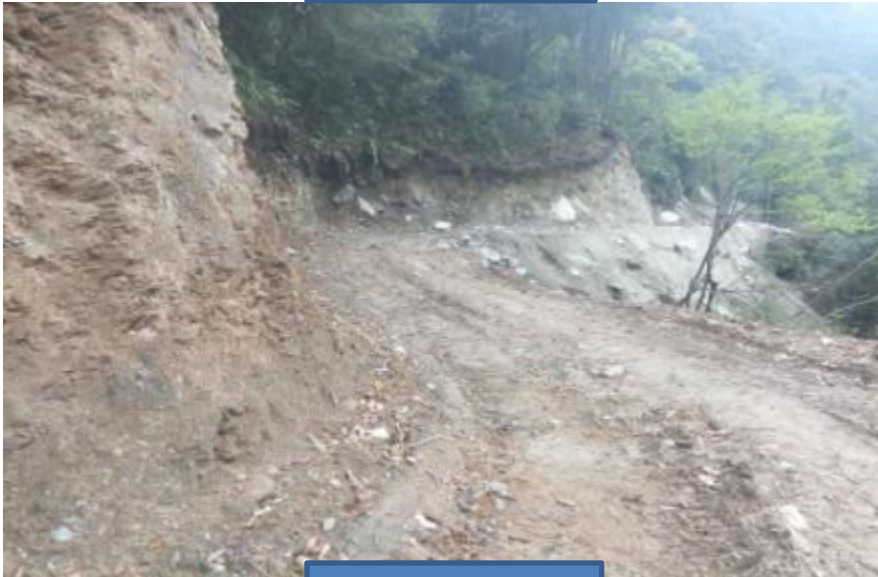
C/O ROAD FROM 168 KM POINT OF ROING-ANINI BRTF ROAD TO ECHIGO (12.00 KM) SH : FORMATION CUTTING



3.690 KM



8.810 KM



8.230 KM



9.000 KM

**C/O ROAD FROM 168 KM POINT OF ROING-ANINI BRTF ROAD
TO ECHIGO (12.00 KM) SH : G.S.B.**



At ch. 2.76 Km



At ch. 7.76 Km

**C/O ROAD FROM 168 KM POINT OF ROING-ANINI BRTF ROAD
TO ECHIGO (12.00 KM) SH : SLAB CULVERT 1.50 M**



At ch. 5.44 Km



At ch. 5.78 Km

**C/O ROAD FROM 168 KM POINT OF ROING-ANINI BRTF ROAD
TO ECHIGO (12.00 KM) SH : SLAB CULVERT 2.00 M**



At ch. 3.56 Km



At ch. 8.32 Km

**C/O ROAD FROM 168 KM POINT OF ROING-ANINI BRTF ROAD
TO ECHIGO (12.00 KM) SH : SLAB CULVERT 6.00 M**



At ch. 6.22 Km



At ch. 10.135 Km

**C/O ROAD FROM 168 KM POINT OF ROING-ANINI BRTF ROAD
TO ECHIGO (12.00 KM) SH : RETAINING WALL**



Retaining wall at Ch.1.895 Km



Retaining wall at Ch. 2.840 Km

SANCTION AMOUNT : Rs. 693.40 lakhs (CS : Rs. 624.06 lakhs & SS : Rs. 69.34 lakhs)

Cumulative Funds Released		Scope of Work		Progressive Achievement upto 3/2018		Target during 2018-19		Achievement during 2018-19		Cumulative Achievement upto		UC Status/ Remark	
				Phy.		Fin.	Phy.	Fin.	Phy.	Fin.	Phy.		Fin.
			Rate										
CS (2013-14)	249.62	WBM-II-14.44 Km	7.97	693.40	13.30	393.96	1.113	160.20					
CS (2017-18)	235.20												
SS (2016-17)	25.00	WBM-III-14.44 Km	8.08		13.09		1.27						
SS (2017-18)	44.34	B/T -14.44 Km	12.50		2.00		12.50						
Total-	554.16	CC Drain-14.44 Km	10.74		14.44		--						
		Crash Barrier – 3400 mtr	0.033		--								

STRENGTHENING OF ROAD FROM CHANGLANG – KHIMIYANG
PH:-II 0 TO 14.50 KM
SH : WBM II & CC DRAINS



Ch:- 0.200 km



Ch:- 2.700 km

STRENGTHENING OF ROAD FROM CHANGLANG – KHIMIYANG
PH:-II 0 TO 14.50 KM
SH : WBM II & CC DRAINS



Ch:- 3.100 km



Ch:- 3.900 km

STRENGTHENING OF ROAD FROM CHANGLANG – KHIMIYANG
PH:-II 0 TO 14.50 KM
SH : WBM II



Ch:-6.050 km



Ch:-6.300 km

STRENGTHENING OF ROAD FROM CHANGLANG – KHIMIYANG
PH:-II 0 TO 14.50 KM
SH : WBM II



Ch:-7.000 km



Ch:-9.100 km

STRENGTHENING OF ROAD FROM CHANGLANG – KHIMIYANG
PH:-II 0 TO 14.50 KM
SH : WBM III



CH:-5.100 Km



CH:-4.900 Km

STRENGTHENING OF ROAD FROM CHANGLANG – KHIMIYANG
PH:-II 0 TO 14.50 KM
SH : WBM III



Ch:-5.850 km



Ch:-6.05 Km

STRENGTHENING OF ROAD FROM CHANGLANG – KHIMIYANG
PH:-II 0 TO 14.50 KM
SH : CARPETTING



Ch. 11.00 Km



YEAR : 2013-14

NAME OF PROJECT : C/o Road from Hawai District Headquarter to Manchal Administrative Circle (Phase-II) C/o Bridges.

SANCTION NO. & DATE : DNER/NLP/AP/144/2010 dated :- 19/12/2013

SANCTION AMOUNT : Rs. 3331.33 lakhs (CS : Rs. 2998.20 lakhs & SS : Rs. 333.13 lakhs)

(Financial figures in lakhs)

Cumulative Funds Released		Scope of Work		Progressive Achievement upto 3/2018		Target during 2018-19		Achievement During 2018-19		Cumulative Achievement upto		UC Status/ Remark
		Phy.		Fin.	Phy.	Fin.	Phy.	Fin.	Phy.	Fin.		
			Rate									
CS (2013-14)	1199.28	RCC Bridge 10 Mtr- 4 Nos	132.76	3331.33	3 Nos 100%	1319.21	1 No. 100% completion	664.70				Pt-V Rs. 664.70 lakhs. Works in progress. UC submitted for Rs. 654.51 Lakhs . Target for completion March'2019
SS (2016-17)	119.93	RCC Bridge 15 Mtr- 9 Nos	142.14		1 No 100%		1 No. 100% completion					
Total-	1319.21	RCC Bridge 30 Mtr-7 Nos	217.29		--							

C/O ROAD FROM HAWAI DISTRICT HQ TO MANCHAL ADMINISTRATIVE CIRCLE (55.77 KM) (PH-II) (SH : PERMANENT RCC BRIDGE)



10 M SPAN AT CH: 2.40KM



10 M SPAN AT CH: 6.80KM

C/O ROAD FROM HAWAI DISTRICT HQ TO MANCHAL ADMINISTRATIVE CIRCLE (55.77 KM) (PH-II) (SH : PERMANENT RCC BRIDGE)



15 M SPAN AT CH: 11.50KM

**C/O ROAD FROM HAWAI DISTRICT HQ TO MANCHAL ADMINISTRATIVE CIRCLE
(55.77 KM) (PH-II) (SH : PERMANENT RCC BRIDGE)**



10 M SPAN AT CH: 11.72 KM



YEAR : 2013-14

NAME OF PROJECT : Construction of Road from Kanubari to Bogapani via Ranglua and Lawnu CO HQ (41.00 Km) (Phase-I) 0.00 to 29.00 Km.

SANCTION NO. & DATE : DNER/NLP/AP/181/2011 dated :- 20/02/2014

AMOUNT : Rs. 2069.00 lakhs (CS : Rs. 1862.10 lakhs & SS : Rs. 206.90 lakhs) *(Financial figures in lakhs)*

Cumulative Funds Released		Scope of Work			Progressive Achievement upto 3/2018		Target during 2018-19		Achievement during 2018-19		Cumulative Achievement upto		UC Status/ Remar k
		Phy.		Fin.	Phy.	Fin.	Phy.	Fin.	Phy.	Fin.	Phy.	Fin.	
	Rate												
CS (2014-15)	744.84	F/Cutting-7.00 Km	32.72	2069.00	7.00	1396.60		295.99					UC Submit for: Rs 1374.60 lacs
CS (2015-16)	740.85	Widening-7.19 Km			7.19								
SS (2015-16)	75.00	G.S.B.-29.00 Km	15.78		29.00								
SS (2016-17)	75.00	WBM-II-29.00 Km	8.90		6.80		22						
SS (2017-18)	56.90	WBM-III- 17.75 Km	10.60		--		17.75						
Total-	1692.59	B/Topping-17.75 km	17.78		--		17.75						
		R/Wall 3 Mtr-140 Mtr	0.29		140								
		R/Wall 4 Mtr-60 Mtr	0.40		30		30						
		B/Wall 2 Mtr-50 mtr	0.19		50								
		S/Cul 1 Mtr-40 Nos	6.28		40								
		S/Cul 2 Mtr-4 Nos	7.95		4								
		S/Cul 6 Mtr- 2 Nos	15.92		2								

CONSTRUCTION OF ROAD FROM KANUBARI TO BOGAPANI VIA RANGLUA AND LAWNU CO HQ (41.00 KM) (PHASE-I) 0.00 TO 29.00 KM



(CH at 8.300 Km)

**FORMATION
CUTTING**



(CH at 9.360 Km)

CONSTRUCTION OF ROAD FROM KANUBARI TO BOGAPANI VIA RANGLUA AND LAWNU CO HQ (41.00 KM) (PHASE-I) 0.00 TO 29.00 KM



(CH at 2.640 Km)

**WIDENING WITH
KUTCHA DRAINS**



(CH at 15.369 Km)

CONSTRUCTION OF ROAD FROM KANUBARI TO BOGAPANI VIA RANGLUA AND LAWNU CO HQ (41.00 KM) (PHASE-I) 0.00 TO 29.00 KM



(CH at 2.520 Km)

GSBC



(CH at 27.330 Km)

CONSTRUCTION OF ROAD FROM KANUBARI TO BOGAPANI VIA RANGLUA AND LAWNU CO HQ (41.00 KM) (PHASE-I) 0.00 TO 29.00 KM



(Ch at 15.500 Km)

WBM-II



(CH at 21.936 Km)

CONSTRUCTION OF ROAD FROM KANUBARI TO BOGAPANI VIA RANGLUA AND LAWNU CO HQ (41.00 KM) (PHASE-I) 0.00 TO 29.00 KM



(CH at 14.410 Km)



(CH at 9.960 Km)

RETAINING WALL

CONSTRUCTION OF ROAD FROM KANUBARI TO BOGAPANI VIA RANGLUA AND LAWNU CO HQ (41.00 KM) (PHASE-I) 0.00 TO 29.00 KM



(CH at 12.600 Km)

BREAST WALLS



(CH at 19.650 Km)

CONSTRUCTION OF ROAD FROM KANUBARI TO BOGAPANI VIA RANGLUA AND LAWNU CO HQ (41.00 KM) (PHASE-I) 0.00 TO 29.00 KM



(CH at 10.991 Km)

SLAB CULVERTS (1 MTR SPAN)



(CH at 14.118 Km)

CONSTRUCTION OF ROAD FROM KANUBARI TO BOGAPANI VIA RANGLUA AND LAWNU CO HQ (41.00 KM) (PHASE-I) 0.00 TO 29.00 KM



SLAB CULVERT (2 MTR SPAN) (CH at 8.490 Km)



SLAB CULVERT (6 MTR SPAN) (CH at 9.980 Km)

**CONSTRUCTION OF ROAD FROM KANUBARI TO BOGAPANI VIA RANGLUA AND LAWNU CO HQ
(41.00 KM) (PHASE-I) 0.00 TO 29.00 KM**



(CH at 7.550 Km)

KUTCHA DRAIN



(CH at 16.750 Km)



YEAR : 2013-14

NAME OF PROJECT : Construction of Road from Shumak to Shalom via Upper Chinhan (15.00 Km) upto WBM Level.

SANCTION NO. & DATE : DNER/NLP/AP/187/2012 dated :- 20/02/2014

SANCTION AMOUNT : Rs. 1840.00 lakhs (CS : Rs. 1656.00 lakhs & SS : Rs. 184.00 lakhs)

(Financial figures in lakhs)

Cumulative Funds Released		Scope of Work		Progressive Expenditure upto 3/2018		Target during 2018-19		Achievement during 2018-19		Cumulative Achievement upto		UC Status// Remark	
		Phy.		Fin.	Phy.	Fin.	Phy.	Fin.	Phy.	Fin.	Phy.		Fin.
	Rate												
CS (2014-15)	662.40	F/Cutting-13.88 Km	40.88	1840.00	13.88	1506.07	--	333.93				UC Submitted CS: 1322.10 lakhs SS: 183.97 Lakhs Total: 1506.07 lakhs	
CS (2016-17)	659.70	G.S.B.-I-13.88 Km	28.98		13.88		--						
SS (2015-16)	66.24	WBM-II-13.88 Km			13.88		--						
SS (2016-17)	66.00	S/Cul 2 Mtr-45 Nos	9.08		47		--						
SS (2017-18)	51.73	S/Cul 4 Mtr-7 Nos	14.75		4		--						
Total-	1506.07	S/Cul 6 Mtr-1 No	18.48		--		--						
		R/Wall & B/Wall 3 Mtr-700 Mtr	0.34		550		150 mtr & Liability to be cleared						
		CC Drain-4164 Mtr	0.017	4164	--								

SHUMAK SHALOM ROAD SH : FORMATION CUTTING



CH: 4.00 KM



CH: 6.00 KM



CH: 9.50 KM

SHUMAK SHALOM ROAD

SH : GSB & WBM



AT CH: 0 KM



CH: 3 KM



AT CH: 13.90 KM

SHUMAK SHALOM ROAD SH : SLAB CULVERTS



2.00MTR SPAN AT CH: 2.502 KM



2.00MTR SPAN AT CH: 4.00 KM



4.00MTR SPAN AT CH: 12.00 KM

SHUMAK SHALOM ROAD SH : CC DRAINS



AT CH: 0.00 KM



AT CH: 2.800 KM



AT CH: 14.00 KM

SHUMAK SHALOM ROAD SH : RETAINING/BREAST WALLS



R/WALL AT CH: 1.900 KM



B/WALL AT CH: 5.200 KM



YEAR : 2013-14

NAME OF PROJECT : Establishment of V.K.V. Residential School at Longding.

SANCTION NO. & DATE : DNER/NLP/AP/207/2013 dated :- 30/01/2014

SANCTION AMOUNT : Rs. 897.19 lakhs (CS : Rs. 807.47 lakhs & SS : Rs. 89.72 lakhs)

(Financial figures in lakhs)

Cumulative Funds Released		Scope of Work		Fin.	Progressive Achievement upto 3/2018		Target during 2018-19		Achievement during 2018-19		Cumulative Achievement upto		UC Status/ Remark
					Phy.	Fin.	Phy.	Fin.	Phy.	Fin.	Phy.	Fin.	
			Rate		Phy.	Fin.	Phy.	Fin.	Phy.	Fin.	Phy.	Fin.	
CS (2013-14)	322.98	D/S School Bldg.- 1883 sqm	412.00	897.19	100%	814.00						UC Submitted CS: 579.43 SS: 32.30 Total: 611.73 PCR with final UC being submtd by Aug'18	
CS (2015-16)	256.45	D/S Hostel work- 1181.28 sqm	259.00		100%								
CS (2017-18)	144.85												
SS (2015-16)	32.30	T-IV- 1 No	14.43		100%								
SS (2017-18)	57.42	T-III- 4 Nos	39.60		100%								
Total-	814.00	T-II- 8 Nos	65.13		100%								
		T-I-8 Nos			100%								

C/O VKV SCHOOL, LONGDING



VIEW OF VKV LONGDING



ACADEMIC BLOCK



T-II- 8 UNIT



T-III- 4 UNIT

C/O VKV SCHOOL, LONGDING



T-I-8 UNIT



HOSTEL BUILDING BLOCK - I



HOSTEL BUILDING BLOCK - II



T-IV- 1 No.

Cumulative Funds Released		Scope of Work		Progressive Achievement upto 3/2018		Target during 2018-19		Achievement during 2018-19		Cumulative Achievement upto		UC Status/ Remark
		Phy.	Fin.	Phy.	Fin.	Phy.	Fin.	Phy.	Fin.	Phy.	Fin.	
CS (2017-18)	112.67	Indoor Multi Sport stadium-1385 sqm	312.98	Upto Ground floor slab completed (25%)	111.51	Indoor multisports complex plinth area -1385.00 sqm) 100% completion.	201.47					UC submitted for Rs. 111.51 Lakhs
Total-	112.67											



C/o Indoor Multi Sports Complex at Namsai



THANK YOU